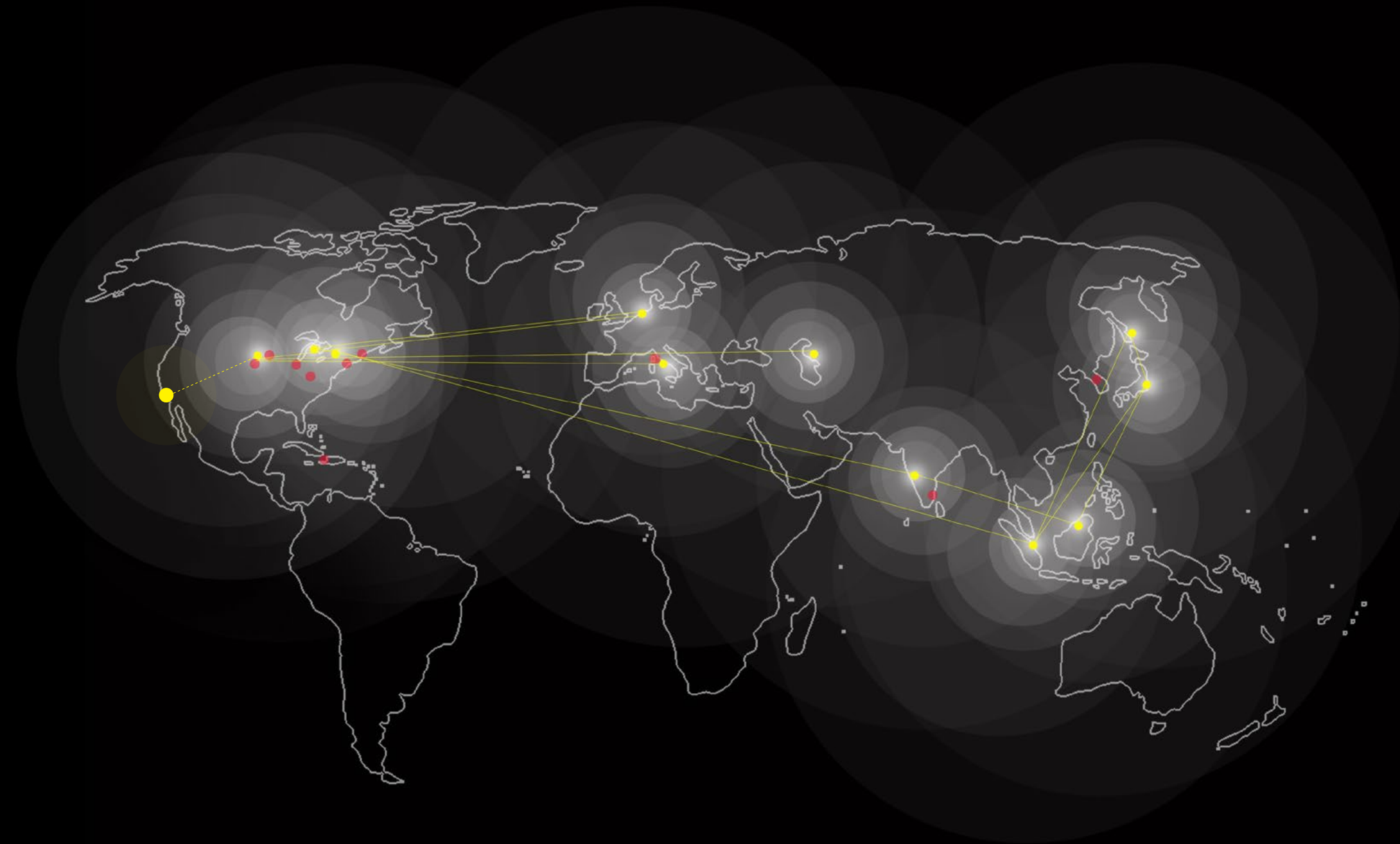
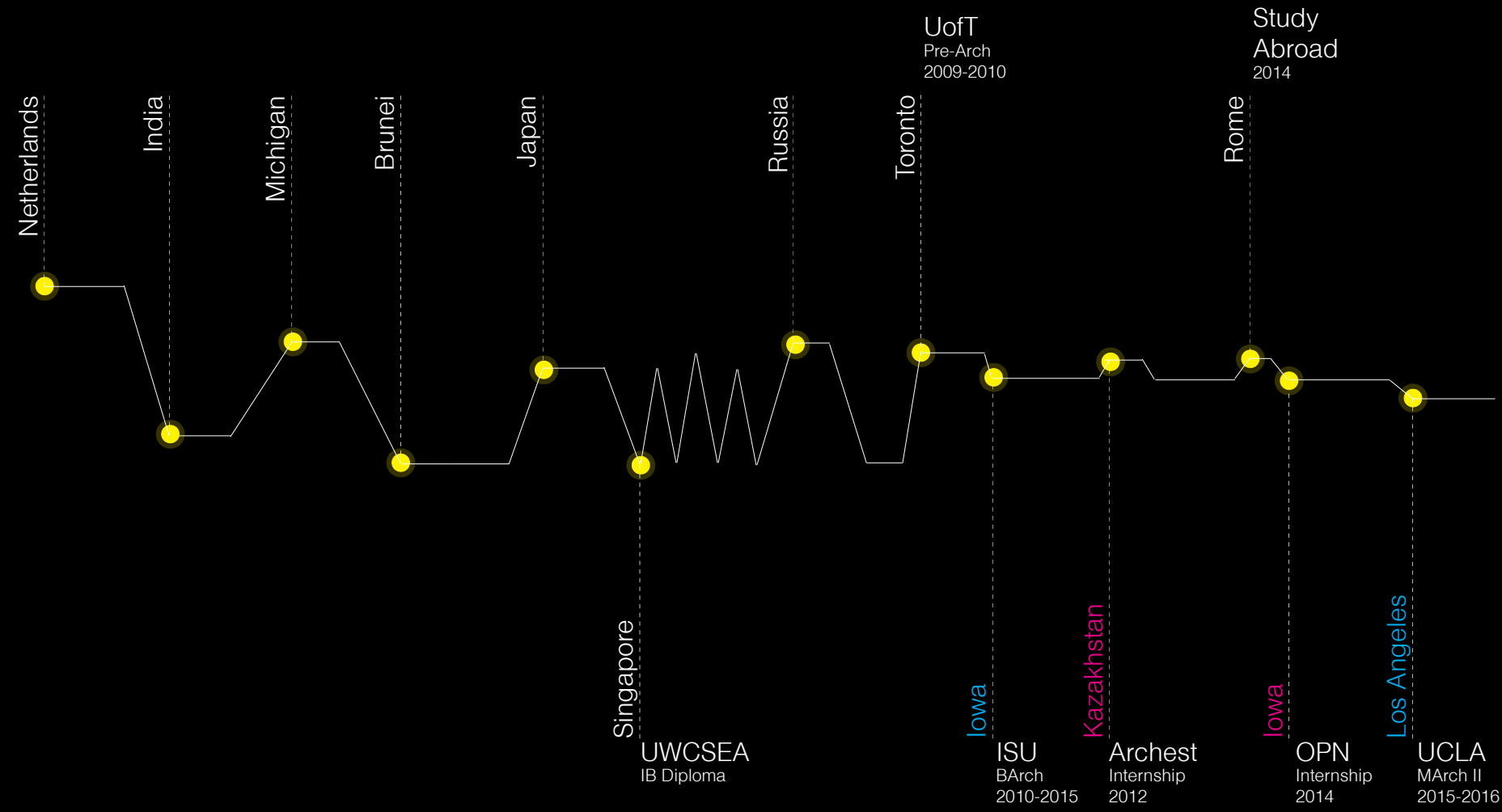




Devika Tandon



● Cities lived in  
● Project Sites

My Nomadic Lifestyle - The world as a classroom

# Boston Music Complex

musical playground

Boston, MA

ISU 5th year - Fall 2014

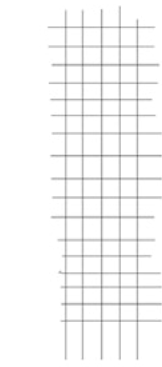
Instructor Jungwoo Ji

Collaboration with Siwen Ma & Jasmine Gunn

All work shown is individual

Project: A music complex proposal at the Innovation district in Boston.

Concept: This musical complex becomes a catalyst in bringing in more people to the innovation district, one of very few public spaces for people to enjoy the waterfront area. Allowing the building to be occupied on the roof creates more area for people to walk around and look out to the surrounding views. The building focuses on the relationship between inside and outside, blurring the separation. The music hall is visually prominent on the site with a warmer wood finish that glows through the facade openings and contrasts with the cool concrete cladding. Stairs become a way of circulation and a seating feature throughout the exterior of the building, creating a dialogue with the Institute of Contemporary Art adjacent to the site.



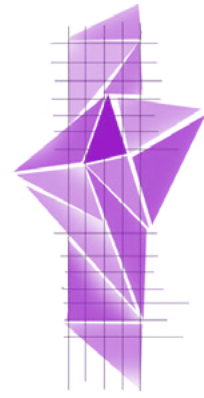
Structural Grid

+

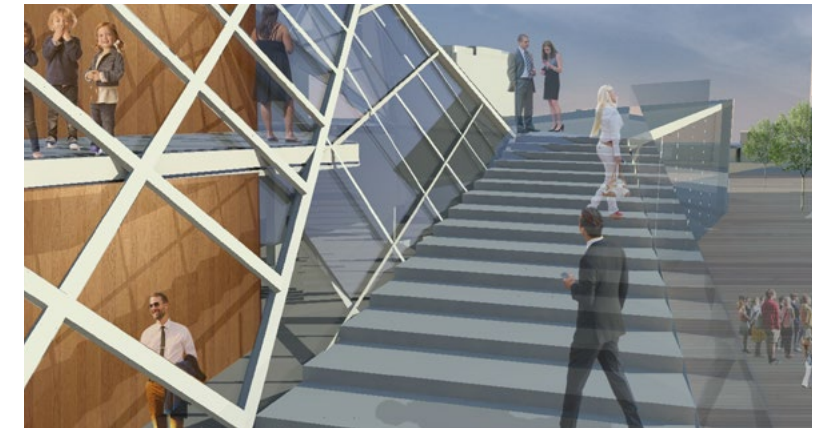


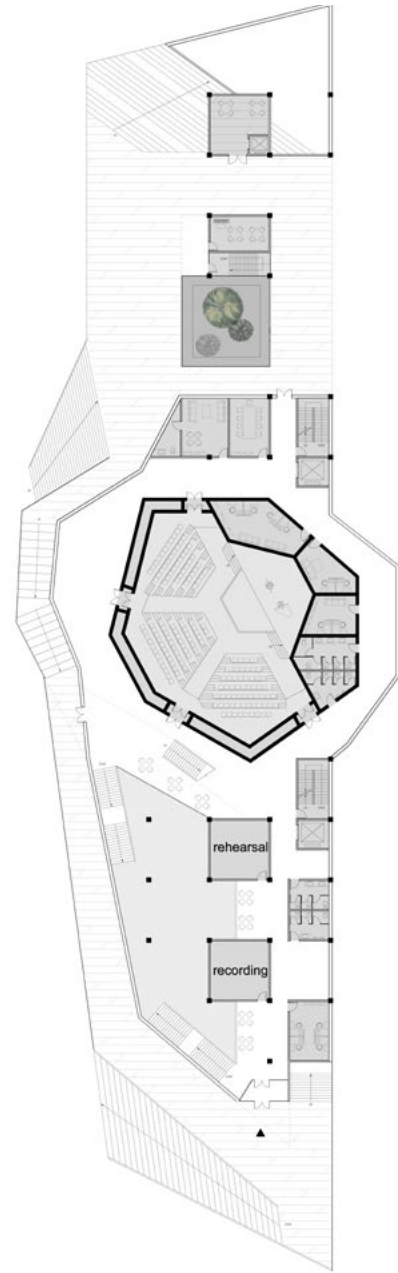
Triangles

=

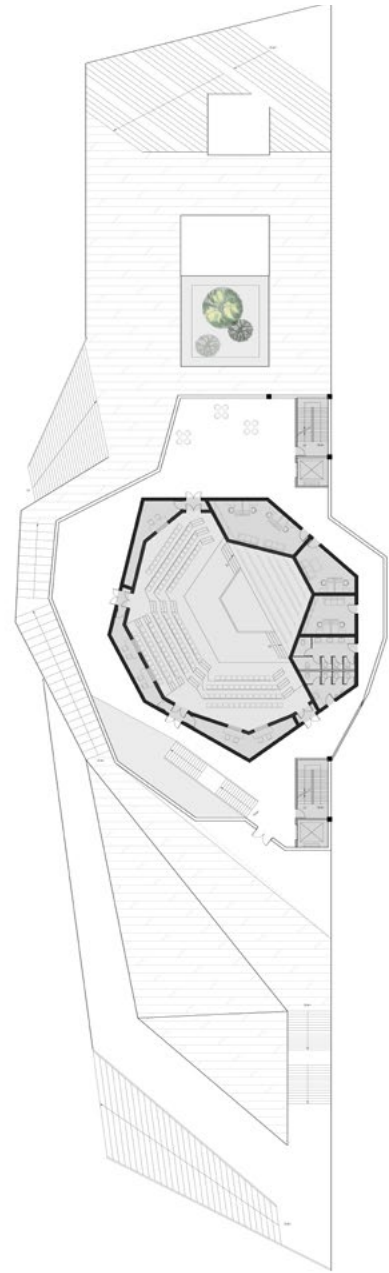


Amalgamation

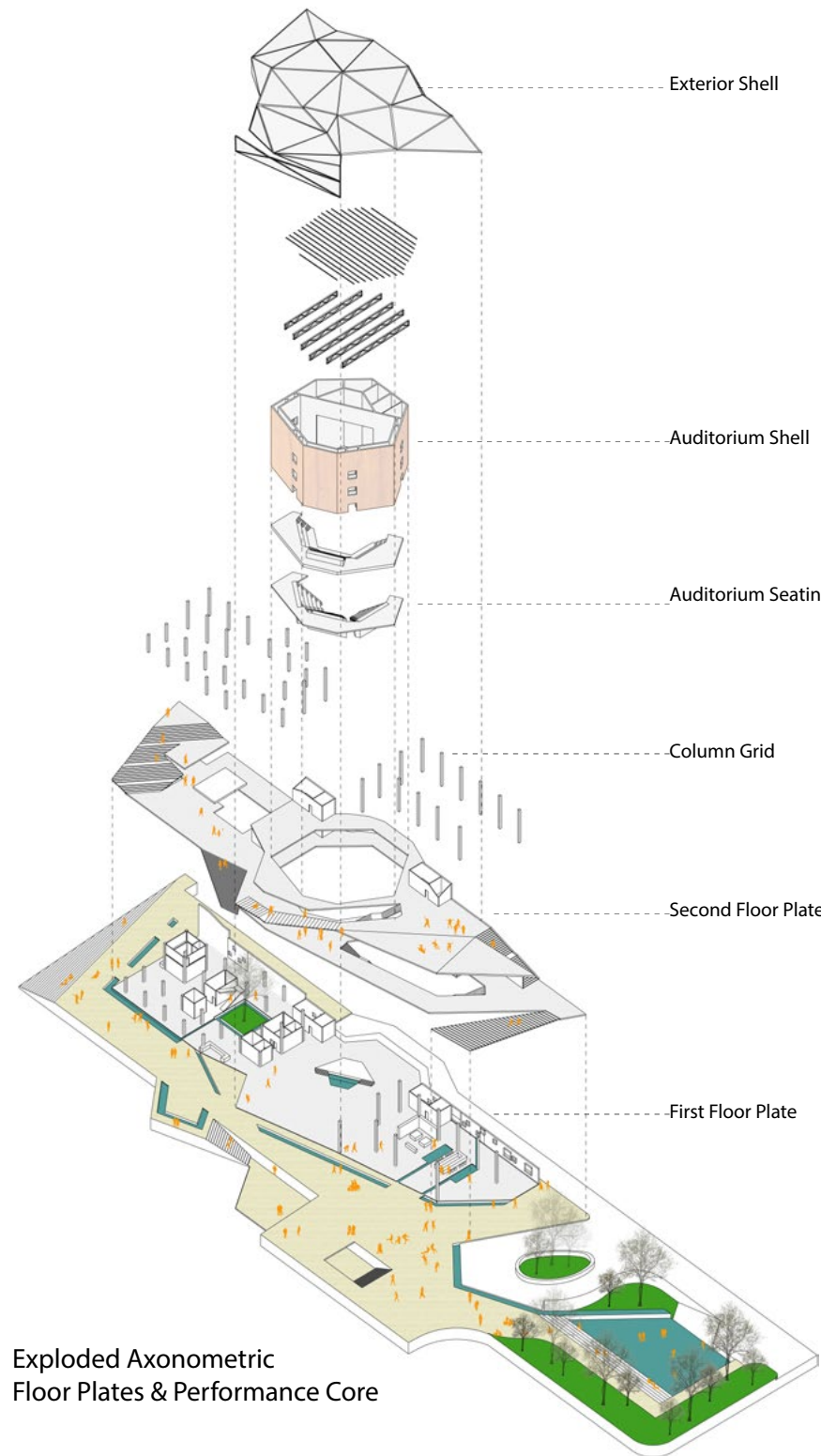




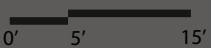
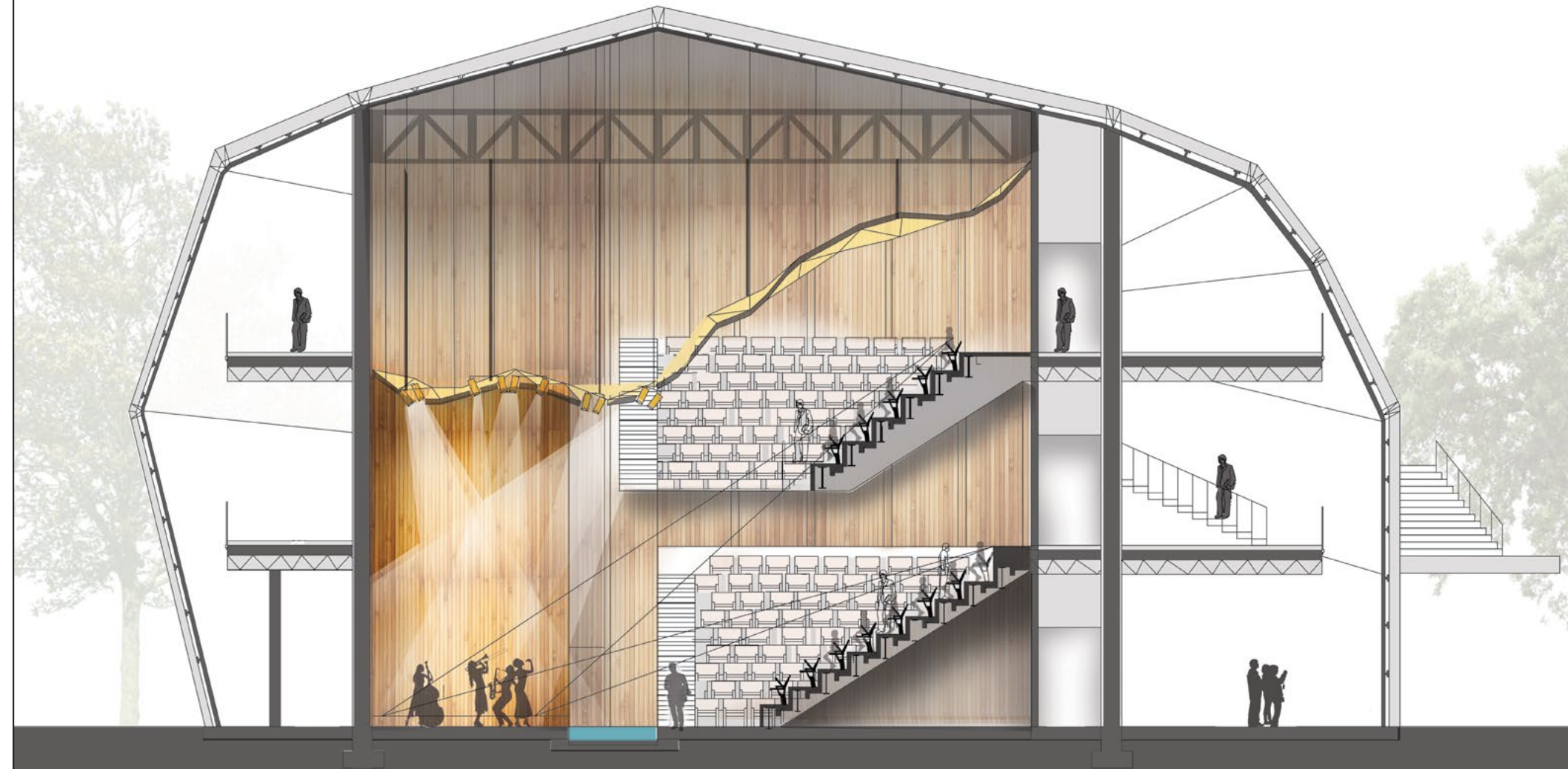
Second Floor



Third Floor



Exploded Axonometric  
Floor Plates & Performance Core



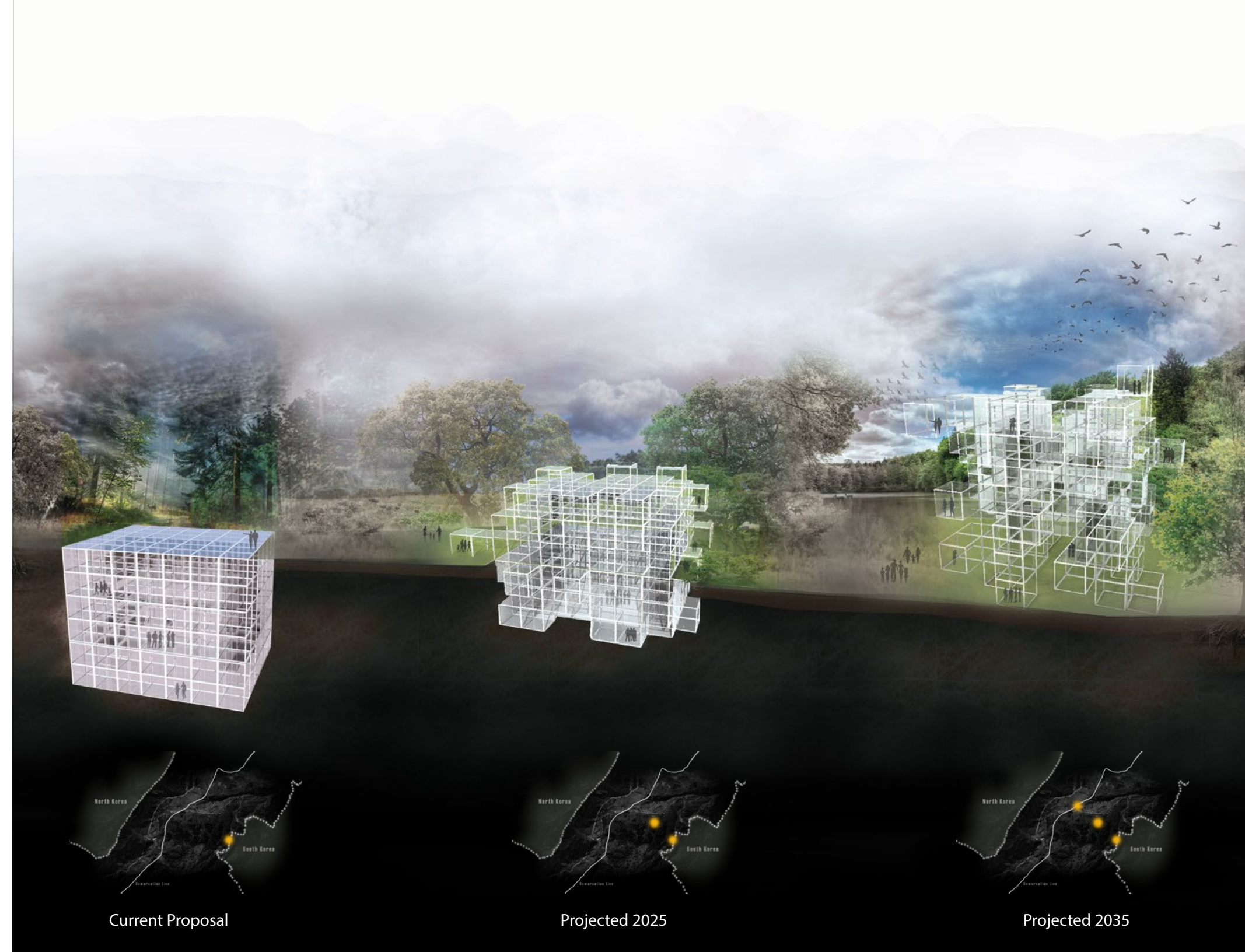
# DMZ Time Capsule

## frozen explosion peace platform

DMZ, South Korea  
Space Prize Competition  
ISU 5th year - Fall 2014  
Instructor Jungwoo Ji  
Collaboration with Jasmine Gunn  
All work shown is individual

**Project:** An observation platform to ease and facilitate reconciliation on the site of the Demilitarized Zone of the Korean Peninsula.

**Concept:** Peace, above all, is a process. This proposal is a project that would develop alongside the quest to peace between North and South Korea progressively. Currently, the Korean DMZ is a place frozen in space and time from any human activity. Since the start of the war over 60 years ago, an alarming number of landmines (2.2 million) have been planted into the site creating a massive void and barrier. The form stems from the idea of capturing a series of frozen images of a landmine explosion. After the object emerges from the ground, voids are left and views to landscape are created. This turns the image of an explosive destruction into a movement towards peace.



# Blossom

whimsical porosity

ISU 4th year - Fall 2013

Instructor Mikesch Muecke

Project: To design a lighting feature using Rhinoceros, taking the project from file to fabrication.

Concept: This project displays the unison of a structural framework with origami, resulting in a unique lighting feature. Taking inspiration from nature, light is filtered through different layers and folds, creating a hierarchical variation in the dissipated light.



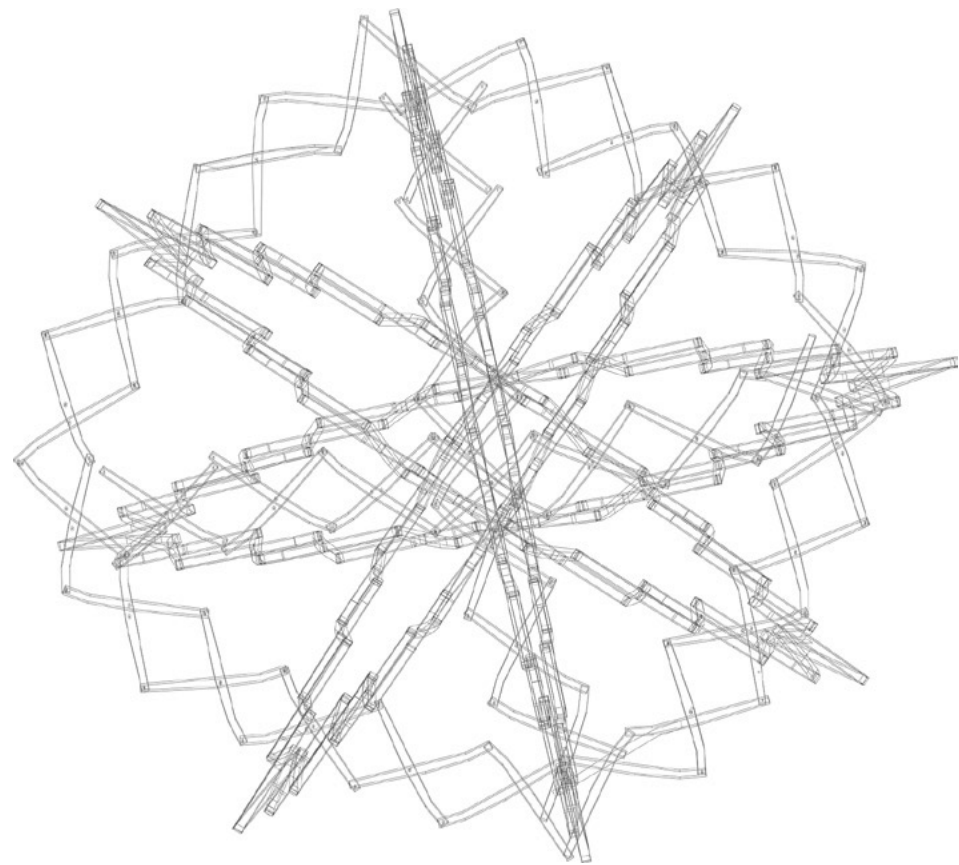
Draw



Prototype



Assemble



# Corporate One

OPN Architects

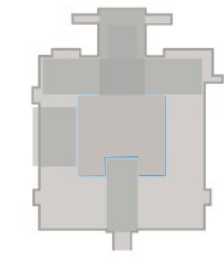
Des Moines, Iowa

Internship - Summer 2014

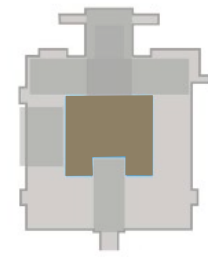
Project Architect Jack Topp

Project: Renovation of Corporate One Building for Principal Financial Group in Downtown Des Moines, Iowa.

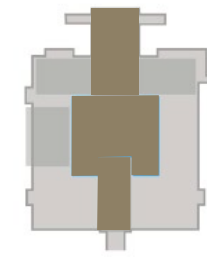
Role: Completion of the reflective ceiling plans for the entire project at the Design Development Phase. Allowing the opportunity for me to participate in multiple meetings with MEP and Structure as well as collaboration with multiple team members. Developed schematic designs for large public central atrium as well as the connection between Corporate one building and the skywalks.



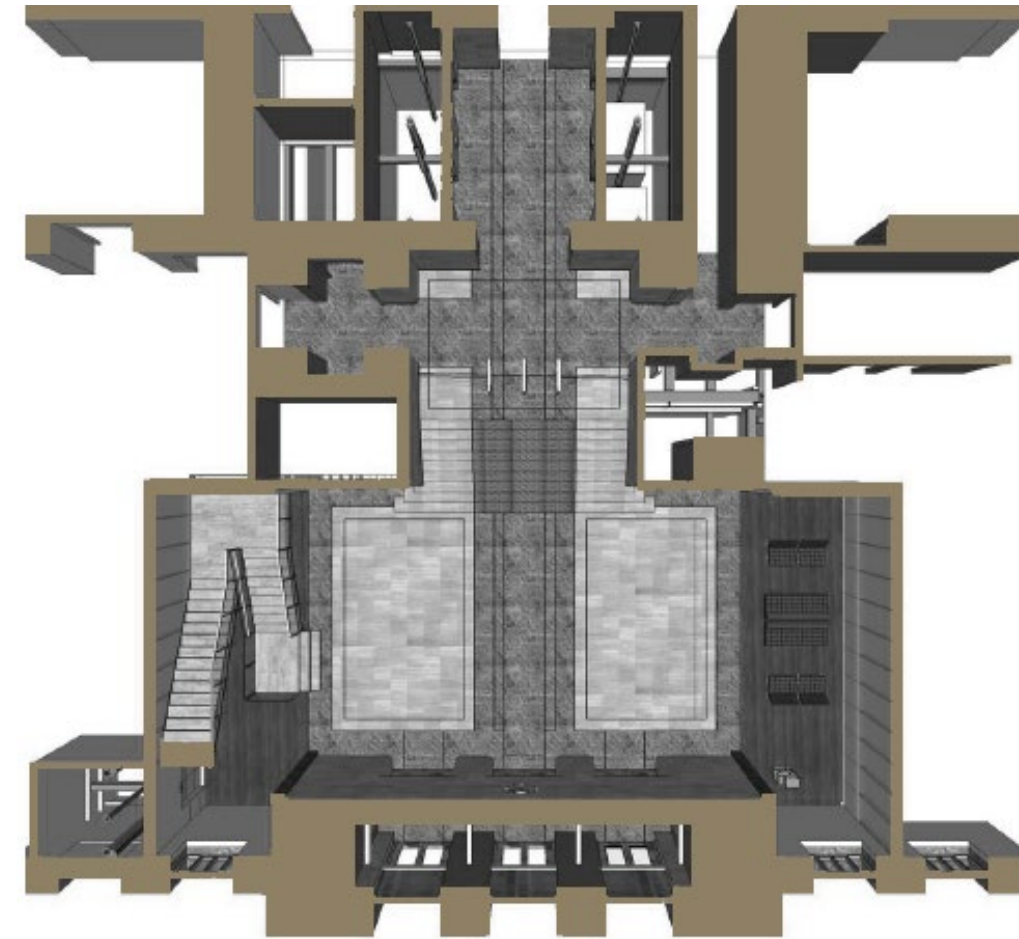
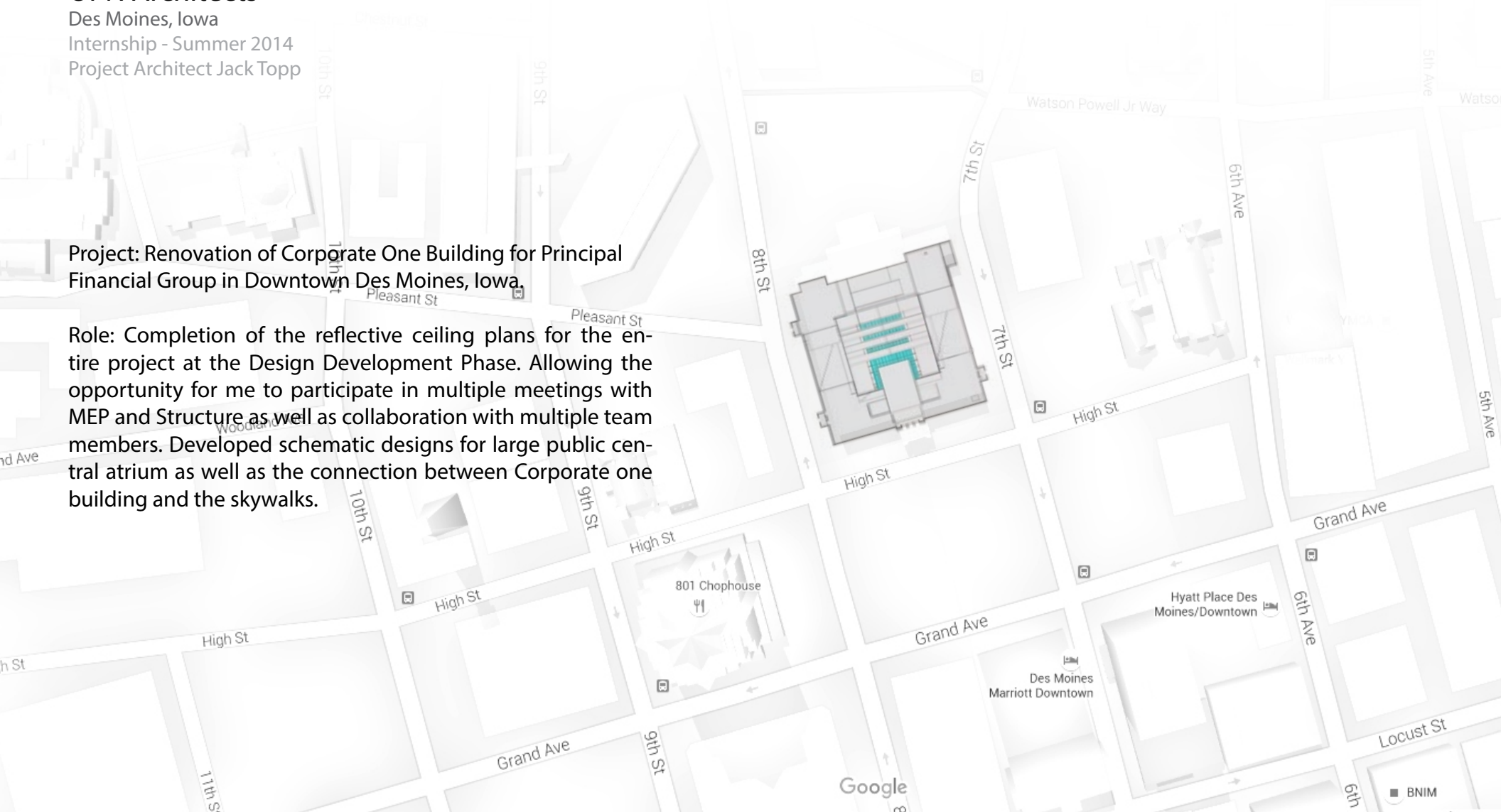
Existing Building



Proposed Atrium

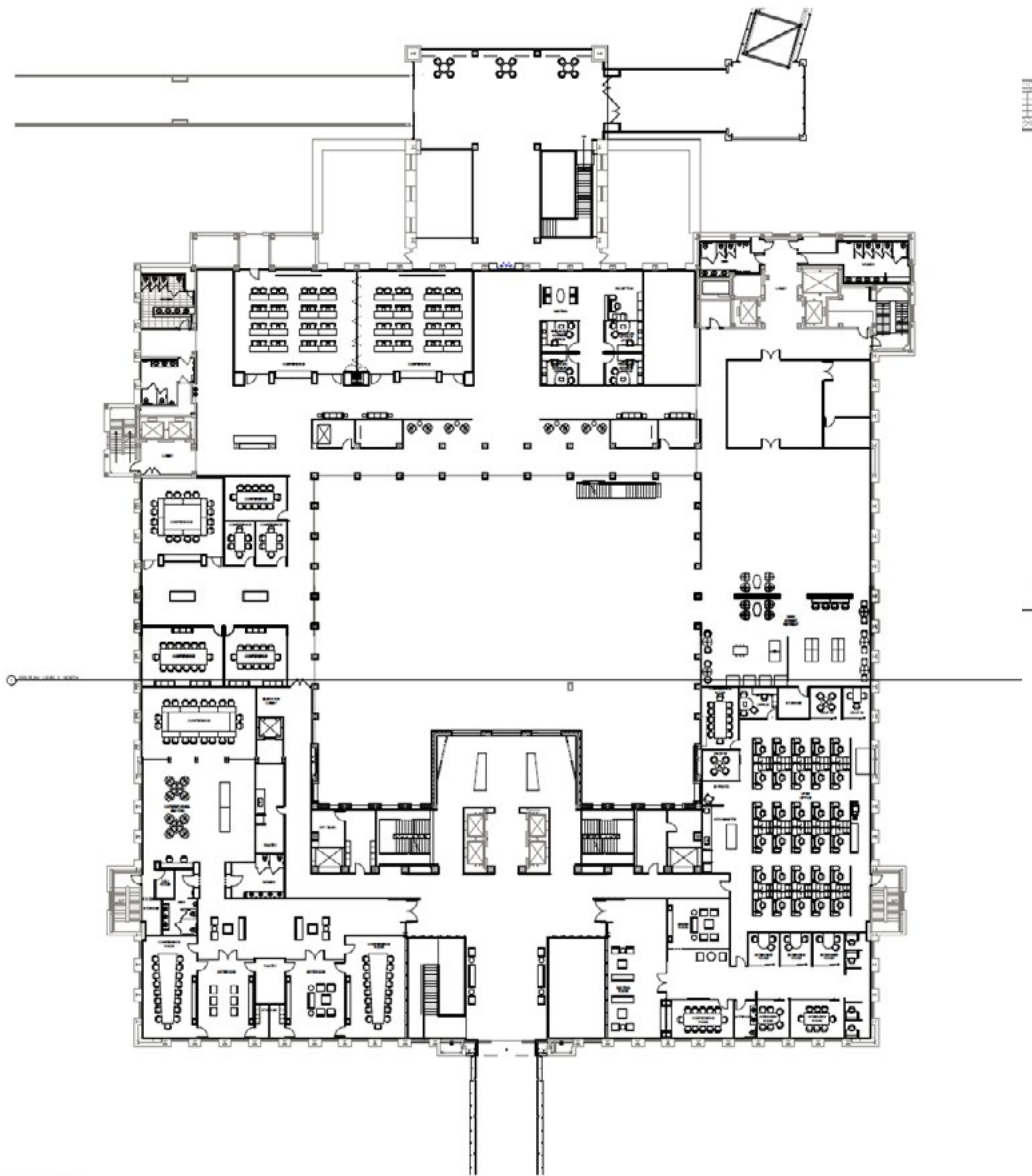


Proposed Connection

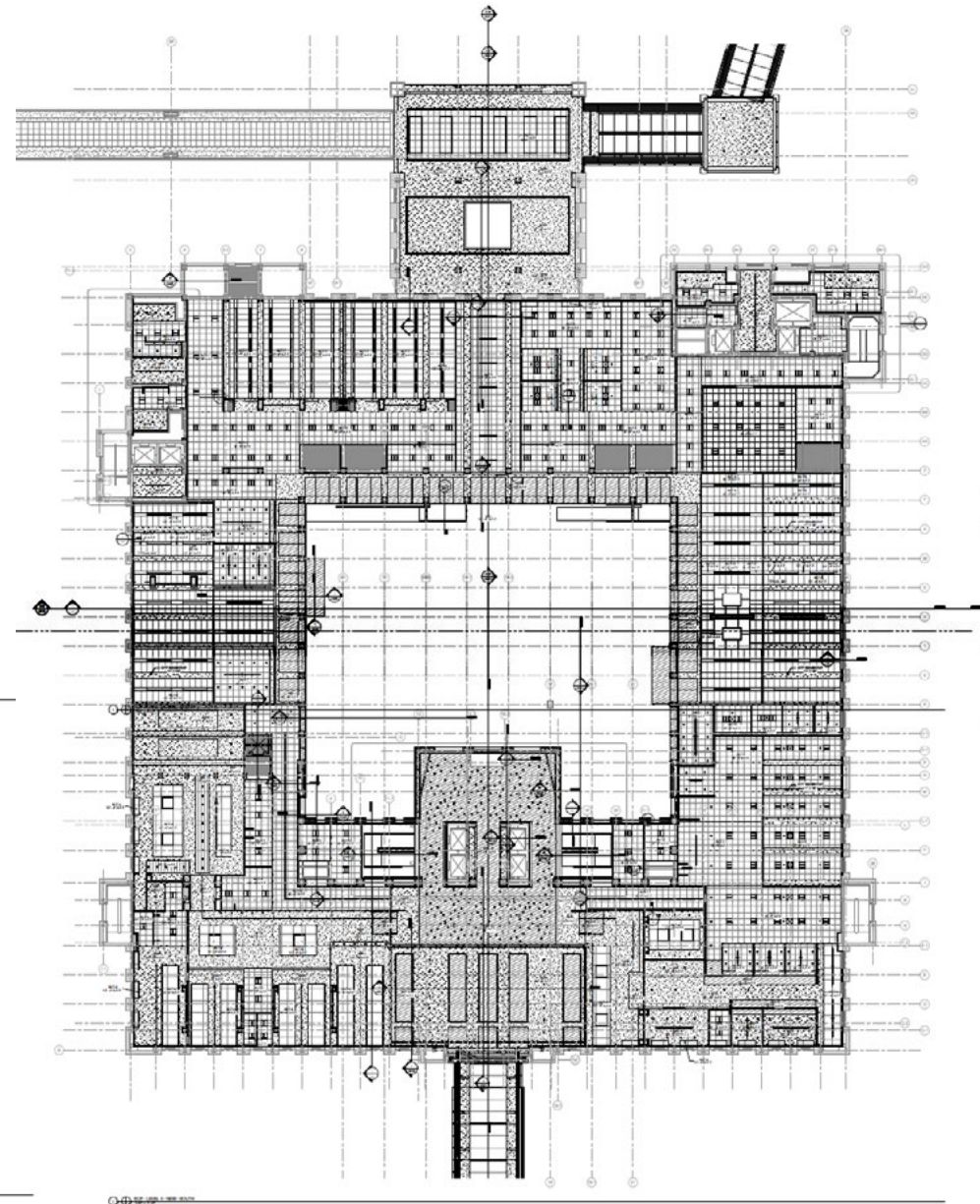


Front Entry Proposal  
Schematic Design





Third Floor Plan



Third Floor Reflective Ceiling Plan



Front Entry Proposal



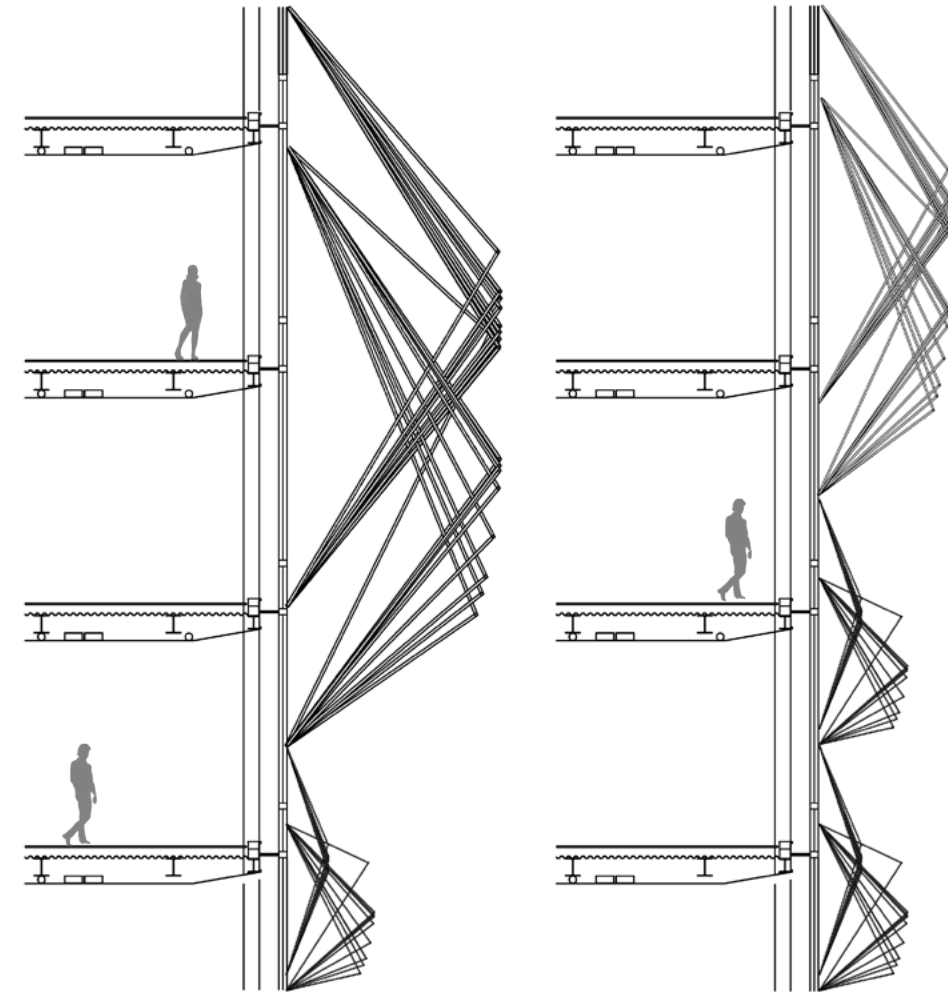
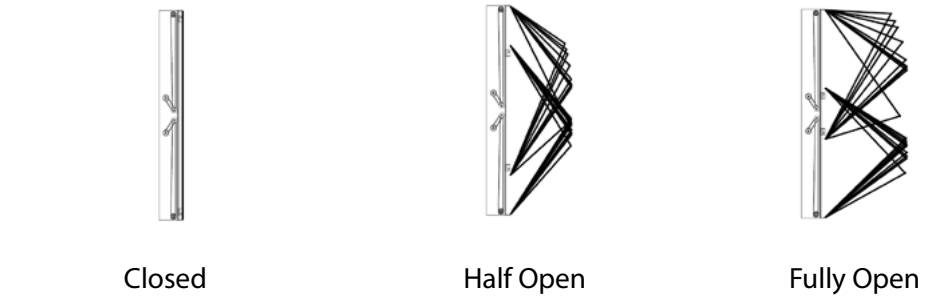
# RhythmiX

## mock up machine

UCLA Graduate School Winter 2016  
Instructor Peter Vikar  
Collaboration with Elisabet Olle,  
Shareefa Abdulsalam & Yeqi Wang

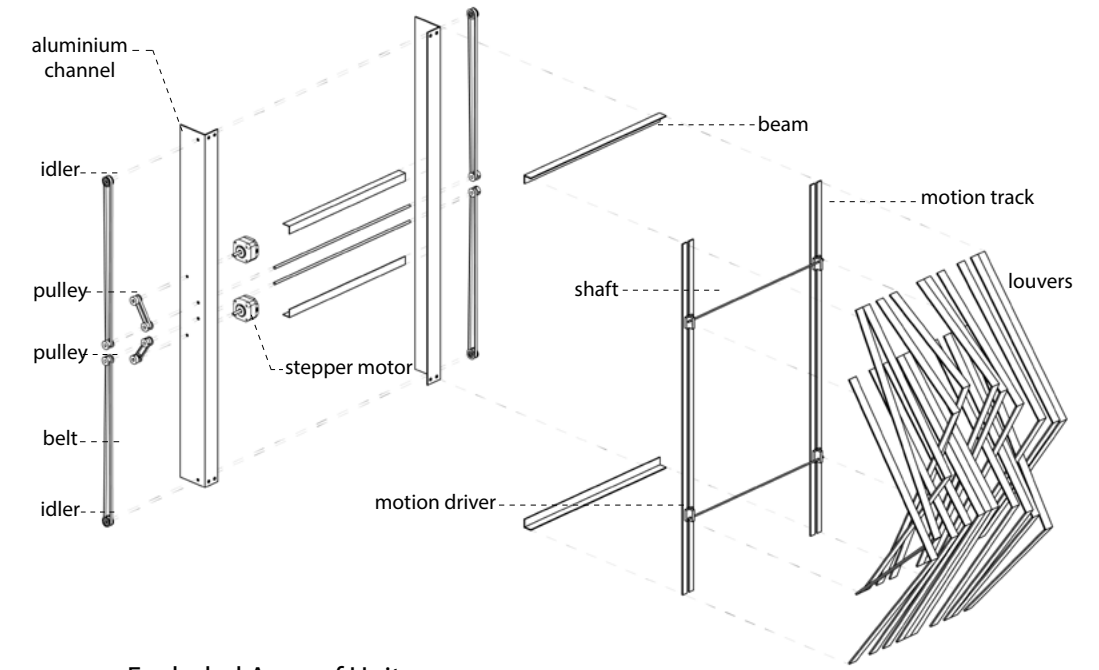
Project: To design and build a kinetic facade prototype that would attach itself to a building like a parasite.

Concept: Bringing a building to life. Rhythmix is a kinetic facade that balances the aesthetic of mechanical components and a series of soft, undulating stripes. The array of linear panels create an element of surprise as they slowly move and transform a flat surface to a volumetric, dynamic one.

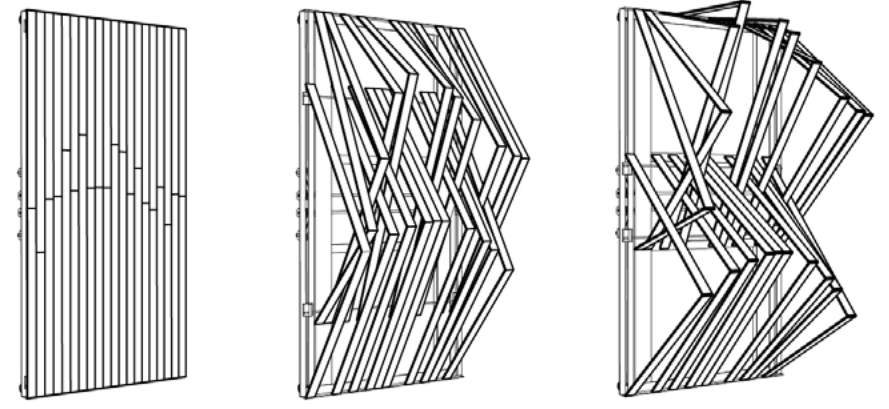


Application of Unit to Facade





Exploded Axon of Unit



Unit Dynamism



Application to Renaissance Center as if a Parasite



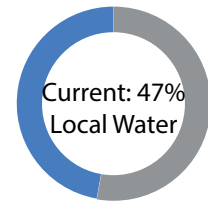
Photograph of Built Prototype

# Sustainable Los Angeles

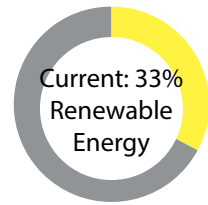
## The Grand Challenges

UCLA Graduate School 2015-2016

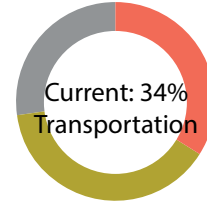
In Collaboration with Thom Mayne & the Now Institute



Goal: 100% Local Water



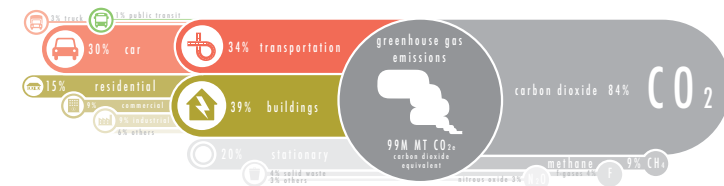
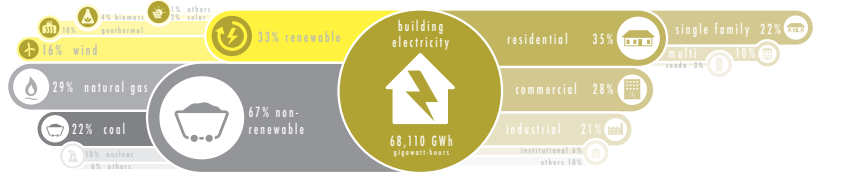
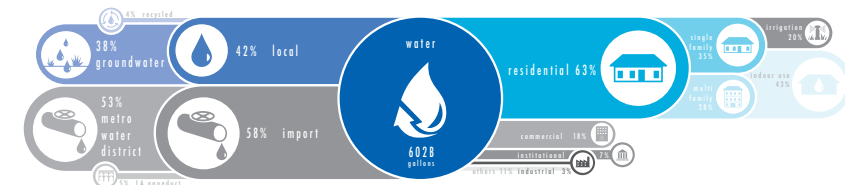
Goal: 100% Renewable Energy



Enhance Ecosystem Health

Goal: To make LA sustainable by 2050.

1.5 Million people will move to LA County by 2050. How will LA host this population in a sustainable manner? The Grand Challenge from UCLA has set three goals to achieve: 100% locally sourced water, 100% renewable energy and to enhance the ecosystem health and biodiversity of Los Angeles County. Using supply and demand, the project is data driven and research oriented to begin to understand the problem.



Supply v.s. Demand



Connectivity & Biodiversity



Demographics



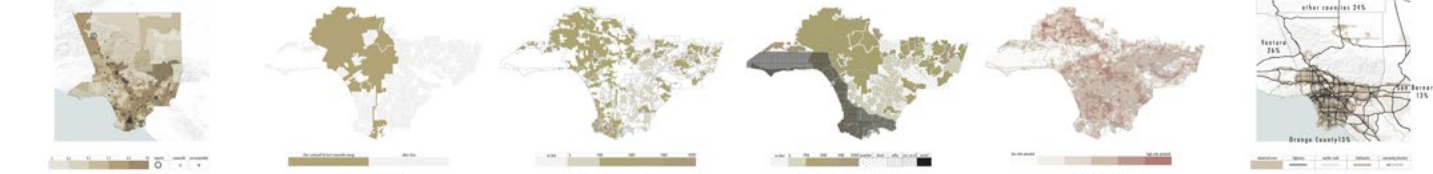
Population distribution



Protected Open Spaces



Water supply & demand



Energy supply & demand

# Wilshire Corridor Densification

## The Grand Challenges

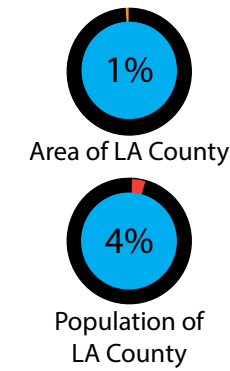
UCLA Graduate School 2015-2016

In Collaboration with Thom Mayne & the Now Institute

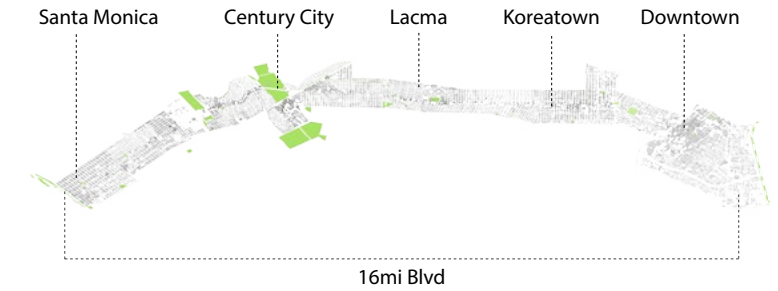
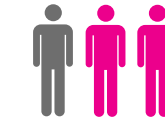


Proposal: Wilshire Corridor, a microcosm of Los Angeles County can host 1 million additional people.

Concept: Using transit oriented districts, Wilshire corridor would be densified in order to preserve the rest of the county and the image of LA. The purple metro line runs along Wilshire Blvd, making this site accessible by public transit. Wilshire corridor would become a work, live, play area reducing the use of cars and thus reducing the pollution and congestion caused by them. Multi family units are also more efficient in the use of water and energy and would further reduce the impact on scarce resources. Urban design and planning are necessary to solve this problem and make LA sustainable.



3X Current Population



**LOS ANGELES +1M**

1 SPRAWL 2 LIMIT SPRAWL

DENSIFY 2050

1% Wilshire Area  
4% Wilshire Population (214,000 people)

Wilshire, Los Angeles  
Broadway, New York  
Diagonal, Barcelona

1.5 km CONTOUR

LAND USE

LAND USE LEGEND

GREEN SPACES

HIGHLIGHTS

BUILDINGS

MUNICIPALITIES

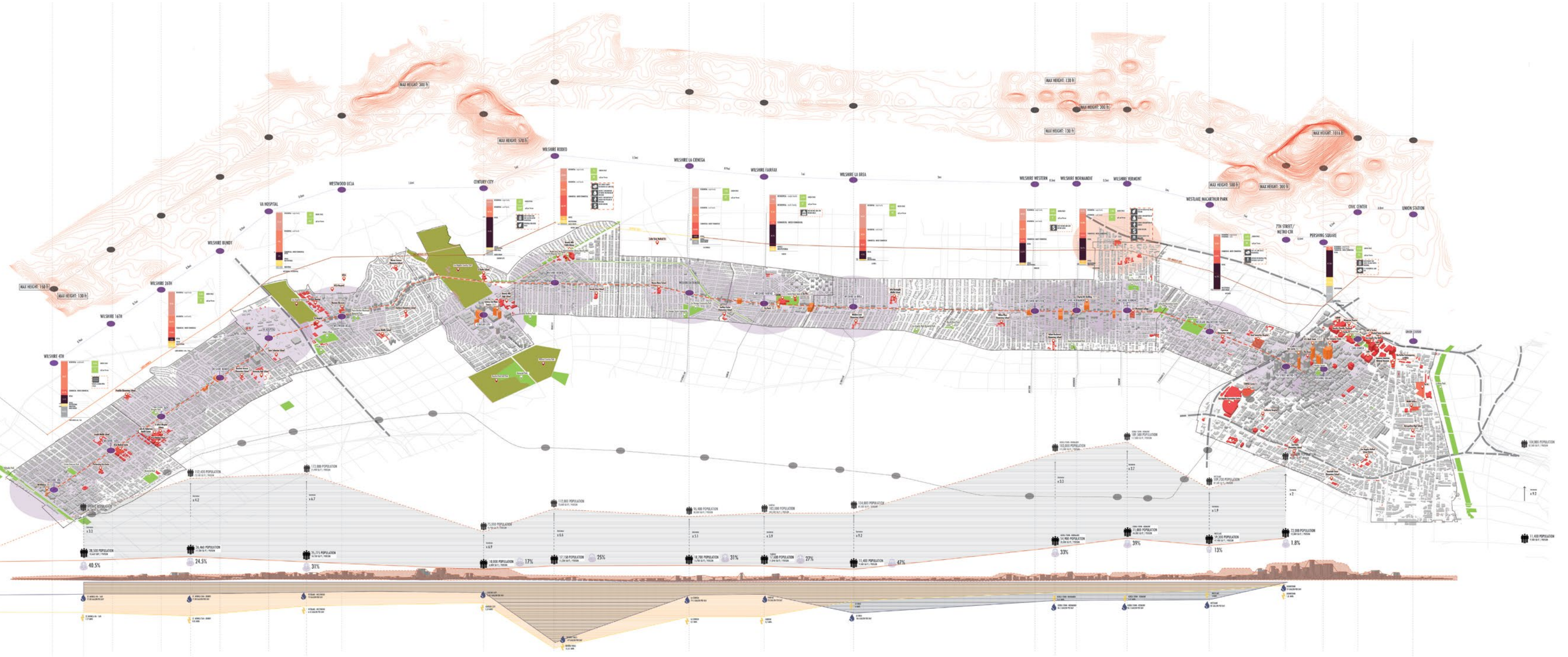
ROADS

TRANSPORTATION

POPULATION

WATER

ENERGY

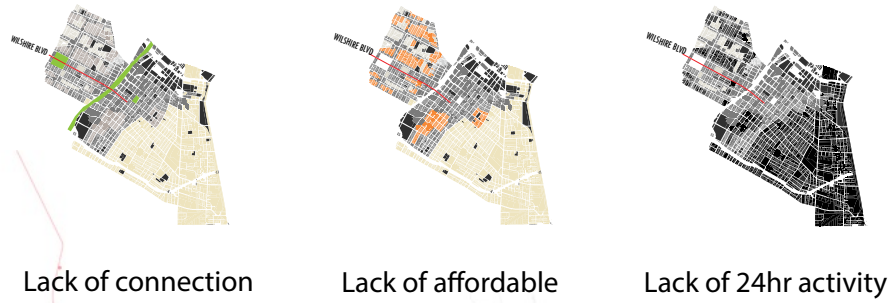


# Downtown Los Angeles

## The Grand Challenges

UCLA Graduate School 2015-2016  
In Collaboration with Halina Zarate Veloso

A bookend of Wilshire Corridor, Downtown LA is an important CBD area within multi nodal Los Angeles. Although it suffers from crime and has a sizable homeless population in recent years, it has begun a transformation to utilize its potential to be a more successful system. Creating a live-work environment is crucial by providing affordable homes for the young working population, increasing the night time population. Downtown has an opportunity to connect cultural nodes to create more active smaller corridors. Currently it is separated from the rest of Wilshire with a highway. This is a critical strip which would become a mixed-use structure bringing a variety of activity and people.



Downtown - The Starting Point of LA